





STANLEY[®]

MAKE SOMETHING GREAT

Stanley has a legacy of being at the cutting edge of hand tool new product design for over 170 years. As the world's largest hand tool brand, Stanley has an ongoing commitment to designing, developing and manufacturing products that meet the exacting demands of today's end users.

Our success is root in 'listening to our customers' and using this knowledge to drive our new products development.

New product innovation



See the complete Stanley range now all in one catalogue, with over 150 new products highlighted throughout.

FatMax[®]
XTREME[™]

FatMax[®] - The ultimate tools built for the professional

We at Stanley are proud of the range of products we call FatMax[®] XTREME[™] or FatMax[®].

Not every Stanley products can be given the title FatMax[®] XTREME[™] or FatMax[®]. There are strict criteria that must be met before a product range can achieve FatMax[®] XTREME[™] or FatMax[®] status.

It all starts with asking the pro consumer what they want from a Stanley tool. We use this information to develop products that are professional quality for everyday usage. That is not the whole story though, as we offer fantastic design and quality at the right price.



Judgement day on-site product demonstrations

Are you the site Daddy? We will be continuing to hold on-site demonstrations throughout the country.

You are invited to challenge the toughest Stanley tools in the most demanding situations.

STANLEY WORKS SINCE 1843

GLOBAL LEADER IN HAND TOOLS

For over 160 years of its history Stanley Works was developing itself, growing from small workshop somewhere in the USA to global corporation. This achievement is a direct result of imposing a rule that excellence is a priority. High quality demands innovation and constant research in regards to material used as well as technology. Being in touch with end users Stanley created number of innovative products: instant change knife 10-788, AntiVibe hammer, DYNAGRIP PRO screwdriver or new kinds of mechanic tools.

HISTORY

- 1843 - Frederic T. Stanley and his brother William start manufacturing bolt and door hardware, New Britain, Connecticut, USA
- 1857 - Creation of a new name - The Stanley Works
- 1857 - Henry Stanley, Frederic's cousin, founded The Stanley Rule and level Company
- 1966 - The Stanley Work goes for NYSE
- 1970 - Take over of QUENOT-MABO factory in Besancon, France, premier producer of measuring tools in Europe
- 1980 - Purchase of MAC TOOLS nad PROTO- two American companies producing professional automotive tools
- 1986 - Purchase of BOSTITCH - fastening tools manufacturer and NATIONAL HAND TOOLS, producing mechanic tools
- 1989 - Take-over of RABONE-CHESTERMAN, British leader in levels and measuring tools
- 1992 - Purchase of Czech producer of mechanic tools, TONA
- 1993 - Building a new fastening factory in Wroclaw, Poland
- 1996 - Creation of the European branch of The Stanley Works, Stanley Europe
- 2004 - Purchase of CST/Berger, Illinois, USA, leader in production of laser tools
- 2005 - Purchase of FACOM TOOLS, premier European producer of professional automotive tools.
- 2010 - Merge with Black&Decker. New name of corporation StanleyBlack&Decker.

TRADE MARKS

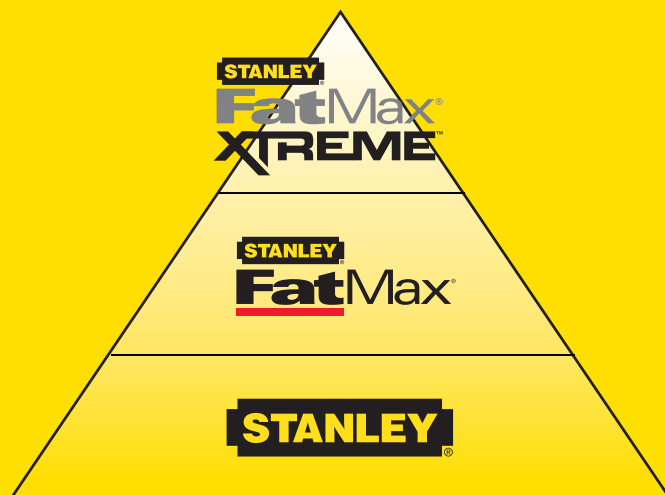
THE FOLLOWING PRODUCTS ARE TRADE MARKS OF THE STANLEY WORKS:

- DynaGrip PRO, Appliflon, Thrifty, MaxiDrive Plus, Blue Strike
- Unless otherwise indicated, the trademarks shown in this catalogue are owned by The Stanley Works or its affiliates in the United States and/or elsewhere.
- The shape of the PowerLock tape rule is a trademark of The Stanley Works or its affiliates in the United States and/or elsewhere.
- Mylar is a trademark of DuPont Teijin Films.
- Phillips is a trademark of the Phillips Screw Company
- Pozidriv is a trademark of the Phillips Screw Company
- Torx is a trademark of the Textron Inc.
- The following products are registered products ®:
- AntiVibe, FatMax XTREME, FatMax, Maxi-Drive, Steelmaster, Bailey, Goldblatt, Phillips, Titan, Bostitch, InterLock, Powerlock, ZAG, CompoCast, JetCut, Pozidrive, DynaGrip, Magnum, IntelliTools, Stanley.

FatMax®



Positioning of Stanley Brands



How to read the catalogue

The product codes (order numbers) are composed of
 1 - Packaging number, 1 digit
 33 - Group number, 2 digits
 887 - Product number, 3 digits
 Always use the full product code for your order

i Product specification, dimensions



Packaging

An "X" indicates that the product is equipped in a hang-up display card. Other products are delivered in boxes, printed sleeves or in bulk



Unit of Sale

The number indicates number of products in a unit of sale



Barcode

FatMax® BLADEARMOR TAPE

- Huge standout of 3.35mm for easy one person measuring
- Mylar® coated blade is up to 10 times more resistant to abrasion than normal lacquered blades
- Blade Armor coating on the first 100 mm reduces the risk of breaking the tape by 95%
- Wide 32mm blade makes reading the numbers easy
- 3 Rivet end hook – 40% stronger than a 2 rivet hook construction
- Specially designed hook grabs on side, top or bottom for versatility
- Cushion grip provides sturdy, slip-resistant hold

STANLEY	i	📦	☒	📊
0-33-720	5 m x 32 mm	X	4	3253560337209
0-33-728	8 m x 32 mm	X	4	3253560337285

CONTENTS



1 Measuring, Leveling and Layout	
Short Tapes	9
Folding Rules and Steel Rules	14
Long Tapes	18
Measuring Wheels	22
Levels	25
Marking Out Tools	33
Chalk Lines	35



2 Lasers and Electronic Devices	
Stud Sensors	43
Hand-held lasers meter	48
Laser Level	50
Cross Line Lasers	52
Rotating lasers	55
Optical Levels	57
Accessories	59



3 Cutting Tools	
Fixed Blade Knives	67
Retractable Blade Knives	69
Snap-Off Blade Knives	74
Craft, Sports and Pocket Knives	76
Blades	78
Saws	85
Specialist Saws	95
Hack Saws	98
Mitre Boxes	101



4 Construction Tools	
Hammers	108
Demolition Tools	119
Cold Chisels	122
Surform	126
Hand File	131
Plasterboard Tools	133



5 Stapling, Riveting and Gluing	
Staple Guns	140
Riveters	146
Glue Guns	148



6 Carpenter's Tools	
Planes and Blades	151
Chisels	158
Clamps	163



7 Mechanic Tools	
Screwdrivers	169
Bits	183
Ratchets	194
Socket Sets and Accessories	202
Spanners and Wrenches	224
Pilers	246
Pincers and Snips	256
Vices	258



8 Tools Storage	
Storage Bags	261
Tool Belts & Pouches	266
Tool Chest	270
Rolling Workshops	274
Tool Boxes	276
Organizers	283
Work Bench and Saw Horses	288
Modular Workshop Storage	291



9 Torches	
Torches	294





MEASURING LEVELING AND LAYOUT

STANLEY

HOW TO CHOOSE SHORT TAPE



Greater standout makes them easier to use

The curved steel blade, first pioneered by Stanley, allows the tape to be extended unsupported, invaluable in situations where you need to measure single handed across space such as setting out roof trusses or measuring across deep site excavations. Stanley's FatMax XL has an incredible market leading 'stand out' of 4 metres.

The most reliable power return and blade locking system

All Stanley's short tapes feature unbeatable power return and blade locking; key developments, which Stanley were the first to pioneer with their famous 'Powerlock' tape.

Blade protection for durability

For demanding environments choose a tape with a Mylar® coated blade, which provides up to 10 times more abrasion resistance than lacquered blades. Stanley's top models also have the additional protection of BladeArmor a thermoplastic coating over the first 15 cm at the end of the blade, which is Subject to the harshest treatment.



Tru Zero end hook for greater accuracy

The strongly riveted end hook is cleverly secured to allow movement, which compensates for its own thickness, to provide the greatest accuracy when making internal or external measurements.

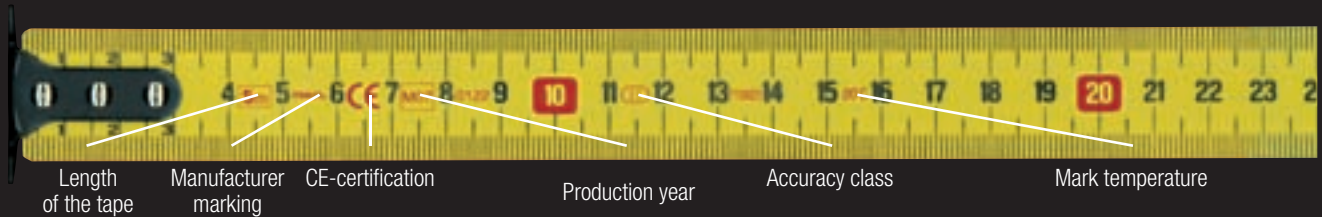
The end hook on some models also features a pencil guide and a circle marker, plus our FatMax and FatMax XL tapes have a three-way hook that can hook the item to be measured from above, below or from the side.

SHORT TAPES

EUROPEAN PRECISION STANDARDS
Permissible tolerances:

Stanley short tapes are extremely accurate, complying with European class II standard, which means that for example, the maximum permissible tolerance over 3 m is less than a millimeter.

Cl. II	1 m	2 m	3 m	5 m	8 m	10 m
mm	0,5	0,7	0,9	1,3	1,9	2,3



STANLEY

FatMax® XTREME SHORT TAPE

**FatMax®
XTREME™**

BladeAmor coating
on the first 150 mm reduces
the risk of breaking the tape by 95%

Belt clip

Wide 32 mm blade
makes reading the number easy.
Huge standout of almost 4 meters
for easy one person measuring

Accuracy class: II

End hook to compensate
for accurate inside and outside
measurements

3 Rivet end hook
- 40% stronger
than a 2 rivet hook construction

Cushion grip
Provides sturdy,
slip-resistant hold

MYLAR® coated blade
is up to 10 times more
resistant to abrasion than
normal lacquered blades

**Ergonomic, metallic,
biomaterial case**

**Anticorrosive
coverage** on blade



STANLEY	i	☞	☒	▣
0-33-887	5 m x 32 mm	X	4	3253560338879
1-33-887	5 m x 32 mm	-	6	3253561338878
0-33-892	8 m x 32 mm	X	4	3253560338923
1-33-892	8 m x 32 mm	-	6	3253561338922
0-33-897	10 m x 32 mm	X	4	3253560338978
1-33-897	10 m x 32 mm	-	4	3253561338977

STANLEY**FatMax® BLADEARMOR TAPE****FatMax®**

- Huge standout of 3.35mm for easy one person measuring
- Mylar® coated blade is up to 10 times more resistant to abrasion than normal lacquered blades
- Blade Armor coating on the first 100mm reduces the risk of breaking the tape by 95%
- Wide 32mm blade makes reading the numbers easy
- 3 Rivet end hook – 40% stronger than a 2 rivet hook construction
- Specially designed hook grabs on side, top or bottom for versatility
- Cushion grip provides sturdy, slip-resistant hold

STANLEY	i	📦	✖	📏
0-33-720	5 m x 32 mm	X	4	3253560337209
0-33-728	8 m x 32 mm	X	4	3253560337285
0-33-811	10 m x 32 mm	X	4	3253560338114

STANLEY**FatMax® SHORT TAPE****FatMax®**

- Belt clip
- The tape is blocked effectively
- The 3-rivet hook offers anti-wrench resistance that is 40 % higher than a 2-rivet hook
- The tape is protected by a MYLAR abrasion-resistant coating - The lifetime is multiplied by 10 compared with a traditional tape
- Ultra-thick tape - 0.13 mm (+15% compared with a traditional tape)
- Antishock, ergonomic and compact bimaterial DYNAGRIP case

STANLEY	i	📦	✖	📏
1-33-681	3 m x 16 mm	-	24	3253561336812
2-33-681	3 m x 16 mm	X	6	3253562336811
1-33-684	5 m x 19 mm	-	16	3253561336843
2-33-684	5 m x 19 mm	X	6	3253562336842

STANLEY**PowerLock BLADEARMOR TAPE**

- Compact case - easier to hold
- 3-rivet hook, to decrease the risk of accidental breakage - 40% stronger than a two-rivet hook
- Tru zero end hook moves to compensate for accurate inside and outside measurements
- Blade Armor coating on the first 100mm reduces the risk of breaking the tape by 95%
- Mylar® coated blade is up to 10 times more resistant to abrasion than normal lacquered blades
- Belt clip for ease of storage
- Strong 19mm width blade for large standout

STANLEY	i	📦	✖	📏
0-33-514	5 m x 25 mm	X	4	3253560335144
1-33-514	5 m x 25 mm	-	12	3253561335143
0-33-527	8 m x 25 mm	X	4	3253560335274
1-33-527	8 m x 25 mm	-	12	3253561335273

STANLEY**MICRO PowerLock BLADEARMOR TAPE**

- Compact case - easier to hold
- 3-rivet end hook - for long life (excluding 3.5m)
- Tru zero end hook moves to compensate for accurate inside and outside measurements
- Mylar® coated blade is up to 10 times more resistant to abrasion than normal lacquered blades
- Belt clip for ease of storage
- Strong 19mm width blade for large standout

STANLEY	i	📦	✖	📏
0-33-522	3 m x 19 mm	X	6	3253560335229
1-33-522	3 m x 19 mm	X	12	3253561335228
0-33-552	5 m x 19 mm	X	6	3253561335228
1-33-552	5 m x 19 mm	X	12	3253561335525
0-33-532	10 m x 32 mm	X	6	3253560335328



- Highly resistant chrome plated metal case
- Anti abrasion Mylar coating - Increases the life of the blade up to 10 times compared to traditional blades
- Tru zero hooks compensates for the thickness of the hook to give accurate internal and external measurements
- Three rivet end hook is 40% stronger than a two rivet hook
- Tape blocking and automatic return
- Class II
- Belt clip

STANLEY	i	☞	☒	▮▮▮
0-33-236	2 m x 12,7 mm	X	6	3253560332365
1-33-236	2 m x 12,7 mm	-	30	3253561332364
0-33-218	3 m x 12,7 mm	X	6	3253560332181
1-33-218	3 m x 12,7 mm	-	30	3253561332180



- Compact case - easier to hold
- Mylar® coated blade is up to 10 times more resistant to abrasion than normal lacquered blades
- Tru zero end hook moves to compensate for accurate inside and outside measurements
- 3-rivet end hook is 40% stronger 3-rivet end hook - for long life (excluding 3.5m)
- Strong 19mm width blade for large stand out
- Highly resistant chrome plated metal case
- Available in 25, 19 and 12,7mm wide blade
- Class II
- Ribbon-blocking button
- Belt clip for ease of storage

STANLEY	i	☞	☒	▮▮▮
0-33-192	2 m x 12,7 mm	X	6	3253560331924
1-33-192	2 m x 12,7 mm	-	30	3253561331923
0-33-041	3 m x 19 mm	X	6	3253560330415
1-33-041	3 m x 19 mm	-	25	3253561330414
0-33-238	3 m x 12,7 mm	X	6	3253560332389
1-33-238	3 m x 12,7 mm	-	30	3253561332388
0-33-194	5 m x 19 mm	X	6	3253560331948
1-33-194	5 m x 19 mm	-	18	3253561331947
0-33-195	5 m x 25 mm	X	4	3253560331955
1-33-195	5 m x 25 mm	-	12	3253561331954
0-33-198	8 m x 25 mm	X	4	3253560331986
1-33-198	8 m x 25 mm	-	12	3253561331985
0-33-442	10 m x 25 mm	X	4	3253560334420
1-33-442	10 m x 25 mm	-	12	3253561334429



- Compact case - easier to hold
- Mylar® coated blade is up to 10 times more resistant to abrasion than normal lacquered blades
- Tru zero end hook moves to compensate for accurate inside and outside measurements
- 3-rivet end hook is 40% stronger 3-rivet end hook - for long life (excluding 3.5m)
- Strong 19mm width blade for large stand out
- Highly resistant chrome plated metal case
- Available in 25, 19 and 12,7mm wide blade
- Class II
- Ribbon-blocking button
- Belt clip for ease of storage

STANLEY	i	☞	☒	▮▮▮
0-33-203	3 m/10 ft x 12,7 mm	X	6	3253560332037
0-33-443	10 m/33 ft x 25 mm	X	4	3253560334437



- Direct reading - Designed for taking internal measurements
- Highly resistant chrome plated metal case
- Tru zero hooks compensates for the thickness of the hook to give accurate internal and external measurements
- 3- rivet end hook is 40% stronger than a two rivet hook
- Anti abrasion Mylar coating. Increases the life of the blade up to 10 times compared to traditional blades
- Class II
- Ribbon-blocking button
- Belt clip

STANLEY	i	☒	☒	
0-33-932	5 m x 19 mm	X	6	3253560339326
1-33-932	5 m x 19 mm	-	16	3253561339325



- Mylar coated blade
- Bimaterial case
- Smooth retraction of the blade into the case
- 3- rivet multi catch end hook is 40% stronger than a two rivet hook
- Airlock-cushion slide lock
- Stand out improved
- Belt clip on the back of the case
- Precision Class II

STANLEY	i	☒	☒	
0-33-918	3 m x 19 mm	X	6	3253560339180
1-33-918	3 m x 19 mm	-	24	3253561339189
0-33-921	5 m x 19 mm	X	6	3253560339210
1-33-921	5 m x 19 mm	-	16	3253561339219
0-33-958	5 m x 28 mm, magnetic hook	X	6	3253560339586
1-33-958	5 m x 28 mm, magnetic hook	-	16	3253561339585
0-33-959	8 m x 28 mm, magnetic hook	X	6	3253560339593
1-33-959	8 m x 28 mm, magnetic hook	-	12	3253561339592



- Bi-material case, made of rigid polypropylene and flexible elastomer for comfortable grip
- Shock proof case
- Available in 25, 19 l 12,7 mm wide blade
- Automatic blade blocking system - Return blade by simply pressing on the button
- Tru zero hook for accurate internal and external measurements
- Enamelled blade
- 3- rivet multi catch end hook is 40% stronger than a two rivet hook
- 2.1m stand out
- Class II
- Belt clip

STANLEY	i	☒	☒	
0-30-809	3 m x 12,7 mm	X	6	3253560308094
0-30-828	8 m x 25 mm	X	4	3253560308285



- Tylon™ coating for greater durability / ear resistance
- Compact design for easy use
- Anti glare blade texture for no glare reflection for easier reading
- Shock resistant case for longer life

STANLEY	i	☞	✕	
0-30-687	3 m x 13 mm	x	6	3253560306878
1-30-687	3 m x 12,7 mm	-	12	3253561306877
0-30-697	5 m x 19 mm	X	6	3253560306977
1-30-697	5 m x 19 mm	-	12	3253561306976
8-30-697	5 m x 19 mm	display	24	3253568306979
0-30-683	5 m x 25 mm	x	6	3253560306830

STANLEY	i	☞	✕	
1-30-683	5 m x 25 mm	-	12	3253561306839
0-30-657	8 m x 25 mm	X	6	3253560306571
1-30-657	8 m x 25 mm	-	12	3253561306570
8-30-687	3 m x 13 mm	display	24	3253568306870
8-30-683	5 m x 25 mm	display	24	3253568306832
8-30-657	8 m x 25 mm	display	24	3253568306573
0-30-686	3 m/10 ft x 12,7 mm	X	6	3253560306861
1-30-686	3 m/10 ft x 12,7 mm	-	12	3253561306860
0-30-696	5 m/16 ft x 19 mm	X	6	3253560306960
1-30-696	5 m/16 ft x 19 mm	-	12	3253561306969
0-30-681	5 m/16 ft x 25 mm	x	6	3253560306816
1-30-681	5 m/16 ft x 25 mm	-	12	3253561306815
0-30-656	8 m/26 ft x 25 mm	X	6	3253560306564
1-30-656	8 m/26 ft x 25 mm	-	12	3253561306563



- Polymer™ blade coating provides superior wear resistance of blade markings for improved readability overtime
- Compact case design, ergonomically shaped with cushioned grip for max. comfort in the hand and in use
- Soft impact resistant case withstands shocks and knocks offering greater blade protection
- High visibility green case allows for easy location in dimly lit conditions

STANLEY	i	☞	✕	
0-30-801	3 m x 13 mm	x	6	3253560308018
1-30-801	3 m x 13 mm	-	12	3253561308017
0-30-804	5 m x 19 mm	x	6	3253560308049
1-30-804	5 m x 19 mm	-	12	3253561308048
0-30-805	8 m x 25 mm	x	6	3253560308056
1-30-805	8 m x 25 mm	-	12	3253561308055



- Ergonomic case
- Corrosion resistant lacquered blade for long life
- Sliding hook for taking measurements in stop and catch mode
- 12,7 mm wide blade
- Belt clip
- Class II
- 0-30-477 and 1-30-477 without blocking and without clip

STANLEY	i	☞	✕	
0-30-487	3 m x 12,7 mm	X	6	3253560304874
1-30-487	3 m x 12,7 mm	-	12	3253561304873
0-30-497	5 m x 19 mm	X	6	3253560304973
1-30-497	5 m x 19 mm	-	12	3253561304972
0-30-457	8 m x 25 mm	X	6	3253560304577
1-30-457	8 m x 25 mm	-	12	3253561304576

STANLEY**STANLEY TAPE WITHOUT BLOCKING**

- Ergonomic case
- Corrosion resistant lacquered blade for long life
- Sliding hook for taking measurements in stop and catch mode
- 12,7 mm wide blade
- Belt clip
- Class II
- Without blocking and without clip

STANLEY	i	☒	☒	☒
0-30-477	3 m x 12,7 mm	X	6	3253560304775
1-30-477	3 m x 12,7 mm	-	12	3253561304774

STANLEY**EUROLOCK SHORT TAPE**

- Sliding hook for taking measurements in stop and catch mode
- Ergonomic case
- Precision Class II

STANLEY	i	☒	☒	☒
1-30-299	3 m, display	X	3	3253561302993

STANLEY**KEYRING PowerLock 1 m**

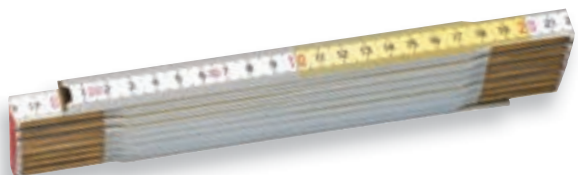
- Ergonomic chrome plated antishock ABS case
- Tape blocking and automatic return
- Keyring

STANLEY	i	☒	☒	☒
0-39-055	1 m	X	6	3253560390556

STANLEY**WOODEN FOLDING RULE WITH WOODEN FINISH**

- Spring Steel Connections
- Hidden Rivets and Brass Fittings
- Multi-Layered Surface Finish
- Resistant to Climatic Effects
- Resistant to Abrasion & Peeling
- Top Layer UV Coating
- Deep etched black figures and graduations for long life
- Class III
- FSC Certificate

STANLEY	i	☒	☒	☒
0-35-454	1 m	X	20	3253560354541
0-35-455	2 m	X	10	3253560354558

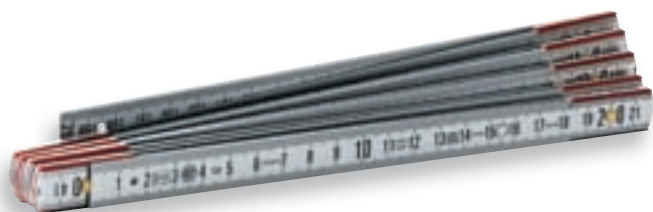
STANLEY**WOODEN FOLDING RULE WHITE & YELLOW FINISH**

STANLEY	i	☒	☒	☒
0-35-458	2 m (white-yellow)	X	10	3253560354589
0-35-459	3 m (white-yellow)	X	10	3253560354596

STANLEY**PLASTIC TYPE FOLDING RULE III**

- ABS & 11% fiberglass folding rule
- 10 folds
- Deep graduation and red decimal figures
- Double spring in each joint, hollow rivets
- Class III

STANLEY	i	☐	☒	
0-35-228	1 m	X	10	3253560352288
0-35-229	2 m	X	12	3253560352295

STANLEY**GRAVEMAT NYLON FOLDING RULE**

- Corrosion-resistant aluminium-alloy folding rule
- The Nylon-Delrin springs avoid seizing problems, improve longevity and allow very rigid arms to click in
- Fine engraving
- Anti-reflection treatment
- Class III

STANLEY	i	☐	☒	
0-35-311	1 m x 15 mm	X	6	3253560353117
0-35-312	2 m x 15 mm	X	6	3253560353124

STANLEY**GRAVEMAT BRASS FOLDING RULE**

- Corrosion-resistant
- Highly resistant brass springs
- Anti-reflection treatment
- Fine engraving

STANLEY	i	☐	☒	
0-35-304	1 m	X	6	3253560353049
1-35-304	1 m	-	12	3253561353048
0-35-305	2 m	X	6	3253560353056
1-35-305	2 m	-	12	3253561353055

STANLEY**ENGINEER'S PRECISION STEEL RULE**

- Stainless Steel – 0,8 mm thick blade, Semi-flexible
- Deep engraving
- Scale in mm – Metric, 1 Side, 2 Edges
- Anti reflection treatment
- Class II

STANLEY	i	☐	☒	
1-35-556	500 mm x 25 mm	-	5	3253561355561
1-35-558	1000 mm x 25 mm	-	5	3253561355585



“

We could see how difficult it was for one man to measure distances over 2 metres single-handedly.

So we developed a new tape that not only stays rigid up to 4 metres, but also has a new, larger hook end for grabbing onto materials.

We call it ‘The Beast’.

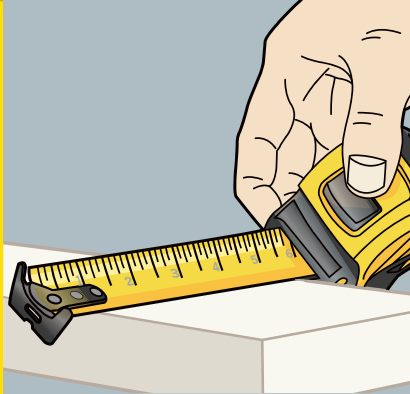
”



TIPS AND TECHNIQUES



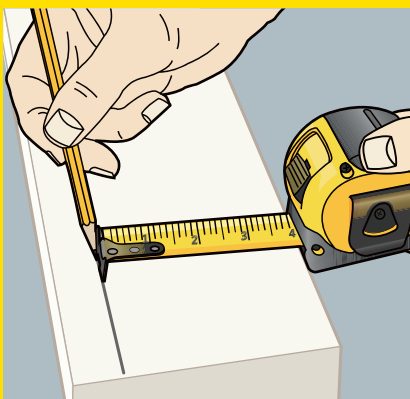
TIP 1 Improve accuracy by tilting the curved blade to be as close as possible to the surface you are measuring.



TIP 2 When fitting one component to another, such as a door into a frame, minimise the risk of measurement error by making a pencil mark on the back of the tape blade to indicate the actual dimension, then transfer it to the door. This is particularly easy with the FatMax Tape, which has a three-way end hook.

The pencil mark can easily be removed with a damp cloth.

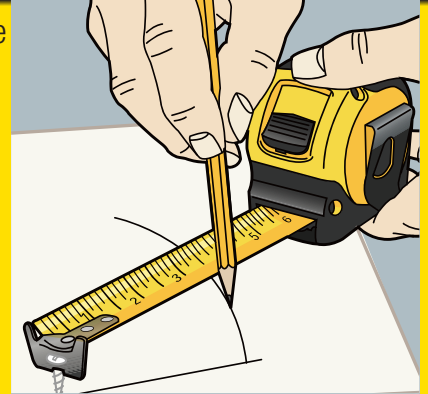
TIP 3 Use the small notch in the end hook for 'pencil gauging' parallel lines down the length of the material, using your finger or the mouth of the rule case to maintain a fixed distance from the edge.



TIP 4 To avoid unnecessary damage to your tape, always control the rate of rewind and ensure that the tape doesn't kink. Longer tapes have very powerful springs, so take particular care to avoid trapping your fingers between the case and the end hook.

TIP 5 For electricians, the blade of a Stanley tape can make an excellent makeshift, 'Fish Tape' for drawing cables through cavities.

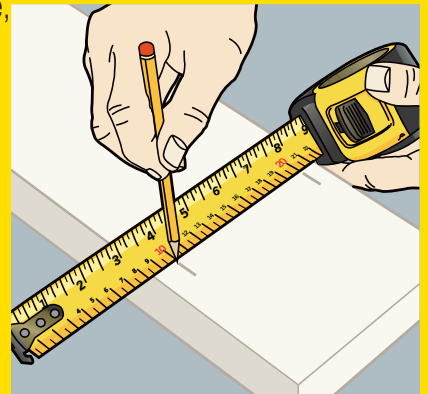
TIP 6 Mark out large circles or arcs by pivoting the hook slot on a nail or screw inserted into the work-piece and holding a pencil at the length of the radius required.



TIP 7 Use the conveniently diamond marked 40 cm/16" centres for setting out joists.

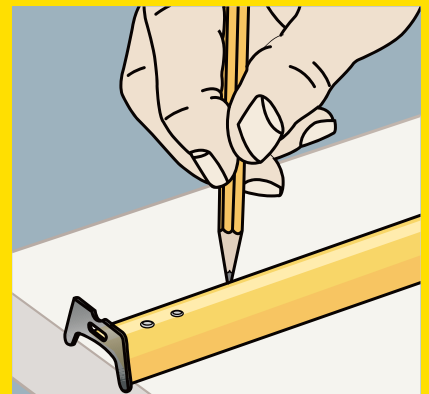
TIP 8 Sometimes, when making a measurement the end hook may interfere with accuracy by holding the blade off the surface,

try laying the tape flat on the work and make your measurement from a convenient 'zero' point such as 10cm, so a measurement of 10cm would appear as 20cm on the tape.



TIP 9 If a steel rule or straight edge is not available you can draw a straight line, by turning the blade over.

TIP 10 Use your tape to check squareness of a box by measuring the diagonals.



LONG TAPES

EUROPEAN PRECISION STANDARDS

Permissible tolerances:

Cl. II	10 m	20 m	30 m	50 m	100 m
mm	2,1	4,3	6,3	10,3	20,3

Cl. III	10 m	20 m	30 m	50 m	100 m
mm	4,6	8,6	12,6	20,6	40,6

Stanley tapes comply with European class II accuracy standards and are printed in black on yellow.

Fibreglass tapes comply with either European class II or III accuracy standards and are printed in black on with tape.

STANLEY

FatMax® STEEL BLADE LONG TAPE



Durable steel mouth lining help reduce wear

Stainless steel flexible and highly resistant blade scale in mm

Width: 10 mm

Fast rewind - 1 turn of the handle = 5 turns of the reel for rapid rewind

High impact ABS closed case to withstand heavy use Case has moulded rubber grip for comfort

Class II

FatMax

STANLEY	i	☑	☒	▣
0-34-133	20 m x 10 mm	X	6	3253560341336
0-34-134	30 m x 10 mm	X	6	3253560341343

STANLEY

MASTER II - MABOLON (WITH HANDLE)



- The Stanley exclusivity MABOLON tape provides exceptional resistance to abrasion, chemical attack and limits the risks of breakage in the event of folding
- Tempered steel tape to ensure both solidity and flexibility
- Highly resistant chrome plated brass frame
- Supplied without case

- Large tape loop (DIN standard) equipped with a removable strap with a fully retractable catching pallet
- Tape and handle interchangeable for right handed or left handed users
- Ergonomic moulded handle
- Removable anchoring point
- Class II

STANLEY	i	☑	☒	▣
1-34-477	30 m x 12,7 mm	-	1	3253561344770
1-34-478	50 m x 12,7 mm	-	1	3253561344787
1-34-734	Replacable blade 30 m x 12,7 mm	-	1	3253561347344
1-34-737	Replacable blade 50 m x 12,7 mm	-	1	3253561347375

STANLEY**MaxSteel LONG TAPE METRIC**

- High impact ABS case
- Rubber grip handle
- Rewinds 3X faster
- Durable & impact resistant construction
- End loop for easy pulling
- Stabilizing ground anchor point
- Folding true-zero end hook
- Blade bumper
- Abrasion resistant nylon steel blade
- 12,7 mm wide blade
- Class II
- Scale in mm – Metric

STANLEY	i	☑	☒	
2-34-799	60 m	X	2	3253562347992

STANLEY**ACIELAK WITH OPEN CASE**

- Perforated steel case covered with an epoxy lacquer that is highly resistant to shocks and corrosion
- Very resistant to folding and abrasion
- Large tape loop (DIN standard) with totally retractable catch pallet
- Chrome plated metal mechanism and handle
- Tangential exit of tape
- Class II

STANLEY	i	☑	☒	
0-34-406	20 m x 12,7 mm	X	2	3253560344061

STANLEY**CLOSED CASE STEEL BLADE METRIC**

- High impact yellow ABS case for strength and visibility
- Steel tape protected by abrasion resistant polymer coating
- Folding crank for storage
- Articulated arm for quick rewinding of tape
- Protective hook stores conveniently in the case
- Graduated every mm
- Class II

STANLEY	i	☑	☒	
0-34-102	10 m x 9,5 mm	X	6	3253560341022
0-34-105	20 m x 9,5 mm	X	6	3253560341053
0-34-108	30 m x 9,5 mm	X	6	3253560341084

STANLEY**FatMax® FIBREGLASS LONG TAPE**

- 19mm wide blade with 64 strands of fibreglass running through the width of the blade for strength and accuracy
- 64 Fibreglass strands for 2x blade strength
- Rewinds 3x faster with 3:1 gear ratio
- Durable and impact resistant construction for long life
- End loop for easy pulling and anchoring
- Abrasion resistant clear coated blade for long life
- Folding tru-zero end hook for accurate internal and external measurements
- Bimaterial handle
- Integrated ground spike to help one person measuring
- Reinforced blade end for long life
- Rubber grip for comfort
- Blade bumper to help prevent damage
- Class II

STANLEY	i	☑	☒	
2-34-814	30 m x 19 mm	X	2	3253562348142
2-34-824	60 m x 19 mm	X	2	3253562348241

FatMax®



- Folding tru zero end hook for accurate inside and outside measurements
- 13mm / 1/2" wide blade
- Rewinds 3X faster with 3:1 gear ratio
- 2-sided blade graphics with fractional decimal/inch foot scales
- Reinforced blade end for long life
- End loop for easy pulling & anchoring

- Slip-resistant Cushion Grip handle
- Blade bumper to help prevent blade damage
- Comfortable contoured handle
- Durable and impact resistant construction for long life
- Class II

STANLEY	i			
2-34-772	30 m x 12,7 mm	X	2	3253562347725
2-34-775	60 m x 12,7 mm	X	2	3253562347756
2-34-777	100 m x 12,7 mm	X	2	3253562347770



- Bi-material handle: for greater comfort
- Anti-shock ABS frame to withstand heavy duty use
- Reinforced fibreglass tape - reduces elasticity & improves measuring accuracy
- Blade printed on both sides for easy measuring
- Corrosion-resistant, UV protected, non-conductive tape
- Tape blade has washable pvc coating for durability

- Integrated ground spike to help one person measuring
- Folding crank for storage & transportation
- Barbed folding hook to anchor the blade
- Integrated pointer to facilitate the unrolling of the tape
- 2mm graduations for precise measuring
- Available in 30m/100ft, 30m, 60m/200ft, 60m
- Class III

STANLEY	i			
2-34-792	30 m x 12,7 mm	X	2	3253562347923
2-34-795	60 m x 12,7 mm	X	2	3253562347954



- High impact ABS closed case to withstand severe work conditions
- Case perforated at rear to allow the tape to be cleaned
- Reinforced fibreglass tape - reduces elasticity and improves measuring accuracy

- White surface with 2mm graduations for precise measuring
- Corrosion-resistant, UV protected, non-conductive tape - highly resistant to site drainage
- Tape blade has washable pvc coating to increase life
- Class III

STANLEY	i			
0-34-295	10 m x 12,7 mm	X	6	3253560342951
0-34-296	20 m x 12,7 mm	X	6	3253560342968
0-34-297	30 m x 12,7 mm	X	6	3253560342975

TIPS AND TECHNIQUES



TIP 1 Avoid twists and kinks in the blade, particularly steel as this could result in breakage.

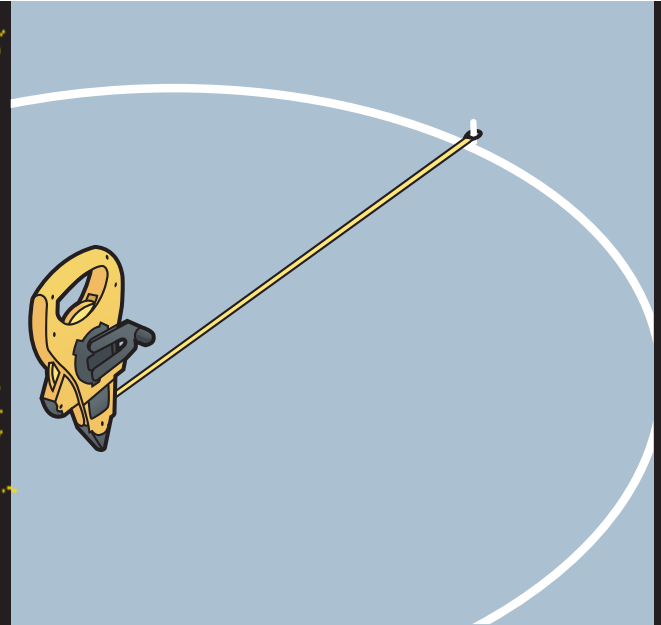
TIP 2 Take care when rewinding to prevent damage to the blade. The rapid rewind of the FatMax is very useful but needs to be slowed down as you near the last few metres.

TIP 3 Wipe the blade clean as you rewind, particularly with an enclosed case model.

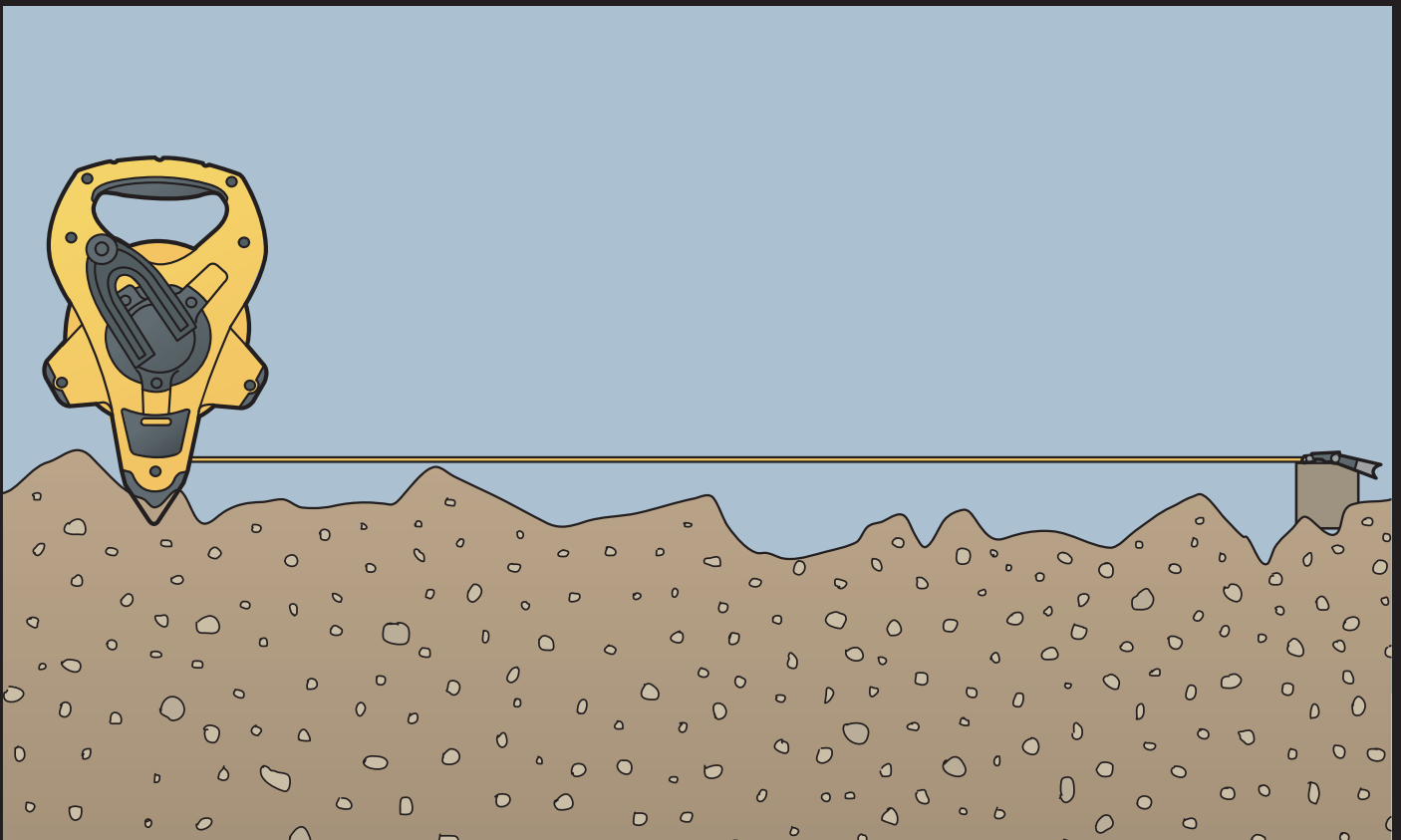
TIP 4 Use the hardened ground spike on the open framed tape to achieve more tension. The principal benefit of the open frame is that debris carried by the tape does not affect the functioning of the tape mechanism.

TIP 5 Lock the blade and apply tension to reduce measurement inaccuracies due to blade droop when measuring across open spaces and uneven surfaces.

TIP 6 All end hooks have the facility to mark out large radii as needed in marking out sport pitches.



TOP TIP Both steel and fibreglass tapes should be kept away from excessive heat from the sun to reduce the risk of expansion and stretch.



STANLEY**MW55D FatMax® PROFESSIONAL MEASURING WHEEL - DISC**

- Positive handle latch - Can be operated easily even when wearing gloves
- Sealed construction - Protects gear drive from dust/debris & Extends working life
- Solid construction - Steel construction, powder coated protection
- Strong metal stand
- High accuracy metal counter
- Rubber tread
- Solid steel wheel/disc wheel
- Geared timing belt
- Impact resistant housing prevents damage
- Large easy-to-use reset lever
- Large easy-read numbers display measurements up to 9999.99 metres
- Hard NBR rubber tread for non slip grip on any surface
- Solid steel wheel (available in spoke or disc rim) with one metre circumference

FatMax**STANLEY**

1-77-108

9999,99 m

1

3253561771088

STANLEY**MW55S FatMax® PROFESSIONAL MEASURING WHEEL - SPOKED**

- Steel spokes for light weight and easy-clean
- Positive handle latch
- Brake protection - Easy-to-use, prevents movement from known point
- Sealed construction - Protects gear drive from dust/debris - Extends working life
- Solid construction - Steel construction, powder coated protection
- Strong metal stand
- Rubber tread
- Solid steel wheel/disc wheel
- Geared timing belt. Large easy-read numbers display measurements up to 9999.99 metres
- Impact resistant housing prevents damage.
- Large easy-to-use reset lever
- Hard NBR rubber tread for non slip grip on any surface

FatMax**STANLEY**

1-77-109

9999,99 m

1

3253561771095

STANLEY**MW20M SMALL MEASURING WHEEL**

- Ideal for laying out and measuring internal spaces
- Small measuring wheel with telescopic handle for ease of transport
- 5 digit counter with reset button
- Twin rubber wheels for stability & durability
- Tough plastic construction for long life

STANLEY

1-77-175

1000 m

-

6

3253561771750

MW40M COUNTER MEASURING WHEEL



- Durable traditional counter measuring wheel for best value
- Gear driven counter with tough plastic housing for long life
- 5 digit counter with manual reset button for superb accuracy
- Heavy Duty metal folding handle & rubber hand grip for maximum durability
- Folding wheel mount
- Die cast Aluminium wheel with wear resistant rubber tread for improved traction & longer life
- Folding Kick stand

STANLEY				
1-77-174	10 000 m	-	6	3253561771743

DMW30 DIGITAL MEASURING WHEEL



- Designed for exterior use, this sturdy measuring wheel folds down for easy storage and has a digital counter with data storage memory
- Bi Directional measurement (measures in either direction) for greater versatility
- Automatic conversion of units of measurement for simple & quick usage
- Stores up to 8 measurements in memory

STANLEY				
1-77-176	10 000 m	-	6	3253561771767

HOW TO CHOOSE LEVEL



BOX BEAM LEVELS

The box section provides the ultimate in terms of overall strength and performance. They are fitted with solid block acrylic vials that have been machined to exacting tolerances to ensure that the movement of the bubble is smooth and comes to rest quickly. A small magnifying area in the centre makes reading the position of the vial easier.



I BEAM LEVELS

I beam or girder section levels offer a lighter weight alternative, fitted with tubular 360° vials.

SELECTING THE RIGHT LENGTH OF LEVEL

The longer the better, particularly if the surface to be levelled is not perfectly true. A shorter level will tend to follow the contour of the surface, whereas a longer level will even out the undulations.

For bricklaying and general builders the best choice is the 1200 mm FatMax XTREME and for concreters the 1800 mm would be a good choice. Finish carpenters may prefer a lighter box or I beam section body in a length of 600 or 900 mm ideal for fitting kitchen furniture and general trim work.

SPECIAL PURPOSE LEVELS

Torpedo Level - The FatMax Torpedo Level has a V groove machined in the base, which allows it to fit firmly on pipe work, ideal for scaffolders, plus it is also perfect for installing shelving or levelling domestic appliances like refrigerators.

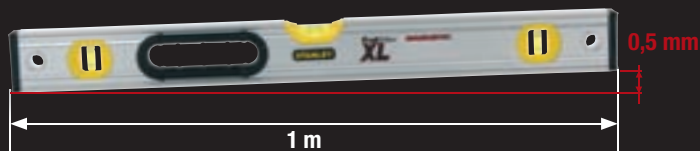
Magnetic Level - Features a magnetic base enabling it to be attached to ferrous surfaces, which is ideal when installing machinery or air conditioning ducting.



Adjustable Vial Level - The rotating vial can be adjusted to between 0° and 90°, enabling you to set angles for roofing or drainage pipes etc.

LEVELS

The accuracy of the levels in the amount a 1 m level needs to be lifted from the horizontal position to bring the bubble in to the perfect level positions. The FatMax XL requires just 0.5 mm/1 m and is backed up with a 10 years warranty.



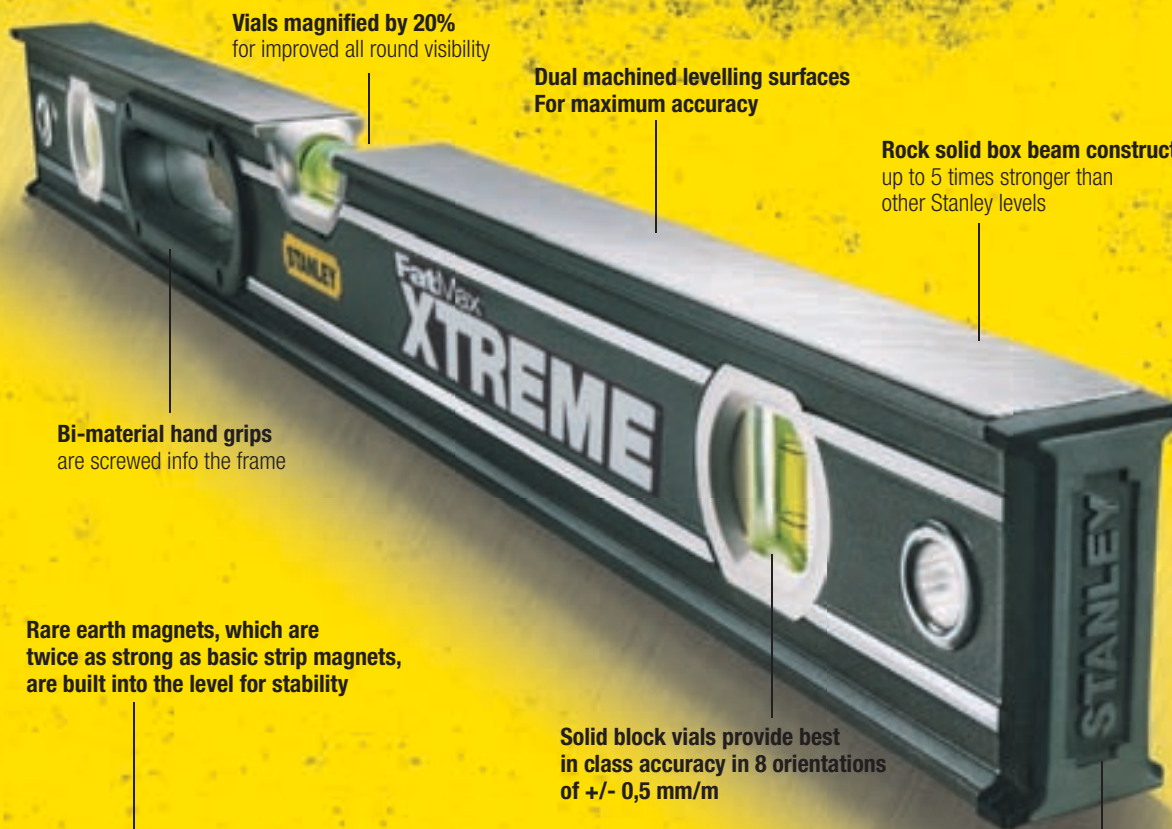
WARRANTY:

Viols in Stanley's level has 5 years warranty.

LEVELS	Accuracy of the levels
Stanley 2, FatMax®, FatMax® XTREME	+/- 0,5 mm
Stanley 3	+/- 1,0 mm
I-BEAM PRO 180°	+/- 1,5 mm
ABS I-BEAM	+/- 2,0 mm

STANLEY

FatMax® XL™ LEVEL



- Vials magnified by 20% for improved all round visibility
- Dual machined levelling surfaces for maximum accuracy
- Bi-material hand grips are screwed into the frame
- Rock solid box beam construction is up to 5 times stronger than other Stanley levels
- Rare earth magnets, which are twice as strong as basic strip magnets, are built into the level for stability
- Solid acrylic block viols provide best in class accuracy in 8 orientations of +/- 0.5mm/m

STANLEY	i	📦	✉	📊
0-43-616	400 mm	X	4	3253560436162
0-43-620	500 mm	X	4	3253560436209
0-43-624	60 cm	X	4	3253560436247
0-43-632	800 mm	X	3	3253560436322
0-43-636	90 cm	X	3	3253560436360
0-43-640	1000 mm	X	3	3253560436407
0-43-648	120 cm	X	3	3253560436483
0-43-660	1500 mm	X	3	3253560436605
0-43-672	180 cm	X	3	3253560436728
0-43-681	2000 mm	X	3	3253560436810
0-43-617	400 mm (magnetyczna)	X	4	3253560436179
0-43-618	500 mm (magnetyczna)	X	4	3253560436186
0-43-625	60 cm (magnetic)	X	4	3253560436254
0-43-633	800 mm (magnetyczna)	X	4	3253560436339
0-43-637	90 cm (magnetic)	X	3	3253560436377
0-43-641	1000 mm (magnetyczna)	X	3	3253560436414
0-43-649	120 cm (magnetic)	X	3	3253560436490
0-43-679	200 cm (magnetic)	X	3	3253560436797

FatMax® XTREME™

STANLEY**FatMax® I Beam LEVEL****FatMax®**

- Aluminum body removes excess dirt and prolongs life
- Solid vials for better control and less slips
- Magnified center vial for more user comfort
- Vials accuracy of 0,5mm/m for improved accuracy

- Top read scale for fast measurements
- MaxEdge center vial: bridged center vial for continuous marking surface
- Shock absorbing end caps makes it long lasting & choc resistant
- Pencil included, quick help for marking



STANLEY	i	☞	☒	▣
1-43-553	60 cm	X	3	3253561435539
1-43-555	120 cm	X	3	3253561435553
1-43-557	180 cm	X	3	3253561435577
1-43-554	60 cm MAGNETIC	X	3	3253561435546
1-43-556	120 cm MAGNETIC	X	3	3253561435560
1-43-558	200 cm MAGNETIC	X	3	3253561435584

STANLEY**FatMax® LEVEL****FatMax®**

- 6mm taller than most competitors
- 6-9mm wider than other levels in its class
- Heaviest in its class giving ultimate strength
- Shock absorbing end caps for long life
- Machine milled on two sides - accurate both sides

- Dual bi-material hand grips, ideal for carrying & vertical levelling
- Improved vial view for ease of use
- Large vial with bridged "dual view" centre vial
- Lifetime guarantee for accuracy

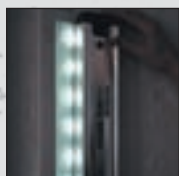


STANLEY	i	☞	☒	▣
1-43-524	60 cm	-	6	3253561435249
1-43-536	90 cm	-	3	3253561435362
1-43-548	120 cm	-	3	3253561435485
1-43-572	180 cm	-	3	3253561435720
1-43-525	60 cm (magnetic)	-	6	3253561435256
1-43-537	90 cm (magnetic)	-	3	3253561435379
1-43-549	120 cm (magnetic)	-	3	3253561435492

STANLEY**FatMax® LIGHTED LEVEL****FatMax®**

- Accurate leveling in any light
- Both utilize surface and vials lit, for improved readability in low lit conditions
- Accurate to +/- 0.5mm/1m in normal working position

- Vials are magnified for improved all round visibility
- Shock resistant end caps withstand shocks and knocks offering greater level protection
- 5 years warranty



STANLEY	i	☞	☒	▣
0-43-518	40 cm	X	3	3253560435165
0-43-527	60 cm	X	3	3253560435271
0-43-552	120 mm	X	3	3253560435523
9-43-552	120 mm + cover	X	6	3253569435524

STANLEY**STANLEY 2 LEVEL MAGNETIC**

- Machined on bottom surface for maximum accuracy (up to 1200mm level)
- Ribbed tubular box section aluminium body for strength and rigidity
- Solid block vials guaranteed against breakage and leakage for 5 years
- Easy to clean epoxy finish for long life
- Accuracy +/- 0.5mm/m

STANLEY	i	☰	☒	☰☰☰
1-42-263	400 mm, 2 magnets, 2 vials	-	6	3253561422638
1-42-268	500 mm, 2 magnets, 2 vials	-	6	3253561422683
1-42-269	600 mm, 2 magnets, 2 vials	-	6	3253561422690
1-42-273	800 mm, 4 magnets, 2 vials	-	6	3253561422737
1-42-278	1000 mm, 4 magnets, 3 vials	-	6	3253561422782
1-42-286	1200 mm, 4 magnets, 3 vials	-	6	3253561422867
1-42-288	1500 mm, 4 magnets, 4 vials	-	6	3253561422881
1-42-289	1800 mm, 4 magnets, 4 vials	-	6	3253561422898
1-42-290	2000 mm, 4 magnets, 4 vials	-	6	3253561422904

STANLEY	i	☰	☒	☰☰☰
1-42-209	400 mm, 2 vials	-	10	3253561422096
1-42-217	500 mm, 2 vials	-	10	3253561422171
1-42-218	600 mm, 2 vials	-	10	3253561422188
1-42-234	600 mm, 3 vials	-	10	3253561422348
1-42-219	800 mm, 2 vials	-	10	3253561422195
1-42-238	900 mm, 3 vials	-	10	3253561422386
1-42-239	1000 mm, 3 vials	-	10	3253561422393
1-42-257	1200 mm, 3 vials	-	10	3253561422577
1-42-258	1500 mm, 4 vials	-	6	3253561422584
1-42-259	1800 mm, 4 vials	-	6	3253561422591
1-42-261	2000 mm, 4 vials	-	6	3253561422614

STANLEY**STANLEY 3 LEVEL**

- Lightweight aluminium box section body for strength & long life
- 1 level and 1 plumb vial for wide range of jobs
- Easy to clean epoxy finish for long life
- Accuracy 1mm/m

STANLEY	i	☰	☒	☰☰☰
1-42-362	300 mm, 2 vials	-	20	3253561423628
1-42-371	450 mm, 2 vials	-	20	3253561423710
1-42-372	500 mm, 2 vials	-	20	3253561423727
1-42-389	600 mm, 2 vials	-	10	3253561423895
1-42-390	800 mm, 2 vials	-	10	3253561423901
1-42-395	1000 mm, 2 vials	-	10	3253561423956
1-42-399	1200 mm, 2 vials	-	10	3253561423994

STANLEY**PRO 180 LEVEL**

- Durable I beam girder section aluminium body for strength & long life
- 3 tubular vials: 1 top read level vial, 1 plumb vial and 1 180° rotating angle vial (double graduation for 0° up to 90° and in 10° increments)
- Shock absorbing end caps protect the accuracy of the level if accidentally dropped
- Accuracy of +/- 1.5mm/m

STANLEY	i	☰	☒	☰☰☰
1-42-919	400 mm, 3 vials	-	6	3253561429194
1-42-920	600 mm, 3 vials	-	6	3253561429200
1-42-921	800 mm, 3 vials	-	6	3253561429217
1-42-922	1000 mm, 3 vials	-	6	3253561429224
1-42-923	1200 mm, 3 vials	-	6	3253561429231

STANLEY**FOAMCAST LEVEL**

- I-beam profile
- Injection moulded ABS body, lightweight and shock resistant
- 3 high visibility tubular vials: level, plumb and 45°

STANLEY	i	☰	☒	☰☰☰
1-42-474	300 mm, 3 vials	-	10	3253561424748
1-42-475	450 mm, 3 vials	-	6	3253561424755
1-42-476	600 mm, 3 vials	-	6	3253561424762
1-42-471	120 mm, 3 vials	-	6	3253561424717

STANLEY**FatMax® XTREME™ TORPEDO LEVEL MAGNETIC****FatMax®
XTREME™**

- Solid block vials provide best-in-class accuracy 0.5mm/m
- Magnified centre vial for improved all round visibility
- V shaped metal groove for use on pipes
- Rare earth magnets which are twice as strong as basic strip

STANLEY**0-43-609**

290 mm

X

12

3253560436094

STANLEY**FatMax® Torpedo Level****FatMax®**

- Die-cast Aluminum Body Provides maximum durability
- Solid block vials
- Vials accuracy of 0,5mm/m For faster and more accurate readings
- Magnified Center Vial
- Rare Earth Magnets For ultimate holding power
- Pipe Groove For use on rounded surfaces

STANLEY**0-43-603**

220 cm

X

6

3253560436032

STANLEY**SHOCKPROOF TORPEDO LEVEL**

- Aluminium plate with V-shaped metal groove to check cylindrical surfaces e.g. for use on pipes
- High visibility reversible vials: horizontal, vertical and 45°
- Rubber end caps to provide protection in case the level is dropped

STANLEY**0-43-510**

25 cm, 3 vials

X

6

3253560435103

0-43-511

25 cm, 3 vials

X

6

3253560435110

0-43-512

25 cm, 3 vials

X

6

3253560435127

STANLEY**TORPEDO LEVEL**

- Lightweight injection moulded ABS body for strength
- 3 tubular vials: 1 level, 1 plumb and a 45° vial
- 0-42-291 – magnetic base

STANLEY**0-42-294**

200 mm, 3 libelki

X

6

3253560422943

0-42-291

200 mm, 3 libelki, magnetic

X

6

3253560422912

STANLEY**TORPEDO LEVEL, ALUMINUM**

- Strong & lightweight aluminium body ideal for small installations
- Magnetic base ideal for steel construction
- 3 vials: horizontal, plumb and 45°
- Protected central vial for resistance to shocks

STANLEY**0-42-465**

230 mm, 3 vials

X

6

3253560424657

FatMax®



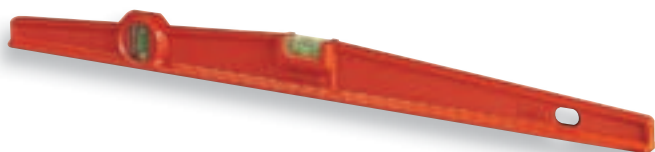
- New shape and look for better ergonomics provides maximum durability - Improved design for a 21st century product
- New shape is easier to grip for faster and more accurate readings
- Magnified horizontal vial improves accuracy
- Improved accuracy: 0,05mm/m
- Machine milled utilite surface
- Rare earth magnets (MALH) for ultimate holding power

STANLEY	i	☞	☒	▣
1-42-311	300 mm	-	4	3253561423116
1-42-312	400 mm	-	4	3253561423123
1-42-313	500 mm	-	4	3253561423130
1-42-314	600 mm	-	4	3253561423147
1-42-315	800 mm	-	4	3253561423154
1-42-316	1000 mm	-	4	3253561423161
1-42-421	400 mm (magnetic)	-	4	3253561424212
1-42-422	500 mm (magnetic)	-	4	3253561424229
1-42-423	600 mm (magnetic)	-	4	3253561424236



- Professional trapezoid level
- Injected body in composite materials - Unbreakable, non-deforming, very resistant to abrasion and non-conductive
- Equipped with 2 acrylic non-disruptable, reversible vials protected against frost
- Precision of +/- 1 mm/m

STANLEY	i	☞	☒	▣
1-42-460	400 mm, 2 vials	-	4	3253561424601
1-42-461	500 mm, 2 vials	-	4	3253561424618
1-42-462	600 mm, 2 vials	-	4	3253561424625



- Solid, practically non-deformable massive body in aluminium alloy
- Suspension hole
- Milled plate for greater precision
- Epoxy paint resistant to abrasion and bad weather
- Horizontal adjustable vial equipped with a fluorescent plate for perfect visibility in all circumstances
- 2 unbreakable, reversible and tinted antishock Altuglass vials
- Precision: +/- 1 mm/m

STANLEY	i	☞	☒	▣
1-42-211	300 mm, 2 vials	-	4	3253561422119
1-42-212	400 mm, 2 vials	-	4	3253561422126
1-42-213	500 mm, 2 vials	-	4	3253561422133
1-42-214	600 mm, 2 vials	-	4	3253561422140
1-42-215	800 mm, 2 vials	-	4	3253561422157
1-42-216	1000 mm, 2 vials	-	4	3253561422164



- Solid, practically non-deformable massive body in aluminium alloy
- Suspension hole
- Milled plate for greater precision
- Epoxy paint resistant to abrasion and bad weather
- Horizontal adjustable vial equipped with a fluorescent plate for perfect visibility in all circumstances
- 2 unbreakable, reversible and tinted antishock Altuglass vials
- Magnetic base
- Precision: +/- 1 mm/m

STANLEY	i	☞	☒	▣
1-42-221	400 mm, 2 libelki (magnetic)	-	4	3253561422218
1-42-222	500 mm, 2 libelki (magnetic)	-	4	3253561422225
1-42-223	600 mm, 2 libelki (magnetic)	-	4	3253561422232

STANLEY**TMLH ANTISHOCK LEVEL**

- Precision of +/- 1mm/m
- Epoxy paint resistant to shocks and bad weather
- Horizontal adjustable vial equipped with a fluorescent plate for perfect visibility in all circumstances
- 2 unbreakable, reversible and tinted antishock Altuglass vials
- Massive body in light resistant aluminium alloy
- 2 machined plates which make it possible to work with precision regardless of the side used

STANLEY	i	☰	☒	☒	☒
1-42-251	400 mm, 2 vials	-	4	3253561422515	
1-42-252	500 mm, 2 vials	-	4	3253561422522	
1-42-253	600 mm, 2 vials	-	4	3253561422539	
1-42-254	800 mm, 2 vials	-	4	3253561422546	

STANLEY**TORPEDO GP LEVEL**

- T profile trapezoid level
- Precision of +/- 2mm/m
- High resistance epoxy paint
- 2 extremely reliable tubular vials
- Machined plate for greater precision
- Made in aluminium

STANLEY	i	☰	☒	☒	☒
1-42-799	250 mm, 2 vials	-	5	3253561427992	
1-42-802	400 mm, 2 vials	-	5	3253561428029	
1-42-804	600 mm, 2 vials	-	5	3253561428043	

STANLEY**MASON BOX LEVEL**

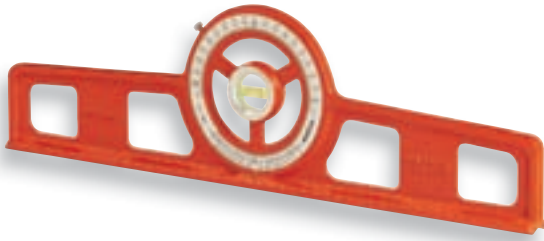
- Horizontal vial glued on ABS plastic support
- Vertical vial gland on an ABS plastic support which is screwed in the body
- Handles are one metre apart for easy use
- Black ABS plastic handle and end caps
- Aluminium body

STANLEY	i	☰	☒	☒	☒
1-42-322	1500 mm	-	30	3253561423222	
0-42-322	1500 mm	X	5	3253560423223	
1-42-323	2000 mm	-	30	3253561423239	
0-42-323	2000 mm	X	5	3253560423230	

STANLEY**STANLEY Post Level**

- For use on metal posts / surfaces
- For reduced risk of damage in transit / use
- Easy to store and portable when not in use
- Ideal for storing small necessary items like screws / nails / marker pen
- Inbuilt magnets
- Vials enclosed
- Onboard storage area

STANLEY	i	☰	☒	☒	☒
0-47-720	-	X	1	3253560477202	

STANLEY**JM50 GRADIENT LEVEL**

- Supplied in a wooden box
- Highly resistant epoxy paint
- An antishock vial machined in the mass, unbreakable and protected against frost
- Massive body in light aluminium alloy
- Direct reading of slopes on a dial graduated in degrees, percentages and simple ratios

STANLEY				
1-42-262	500 mm	-	1	3253561422621

STANLEY**WATER LEVELS**

- Free contact with air by opening the stopper completely
- 2 graduated moulded body vials (120 mm)
- Vials for water level

STANLEY				
0-42-430	200 mm	X	6	3253560424305

STANLEY**LINE LEVEL**

- Ideal for landscape gardening. For levelling on long distances, when precision is not very important
- Useful for setting out levels over large areas where precision is of secondary importance e.g. ideal for landscape gardening
- String level
- Includes hooks for using on string
- Light weight metal body for long life

STANLEY				
0-42-287	80 mm	X	6	3253560422875

TIPS AND TECHNIQUES



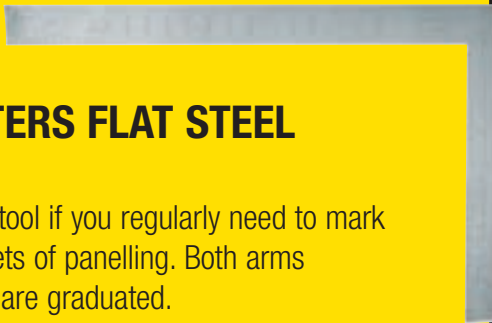
COMBINATION SQUARES

This is an essential part of the on-site carpenters' tool kit, as they incorporate up to 8 functions into one tool: square, mitre square, depth and height gauge, level, steel rule and built in scribe.



CARPENTERS FLAT STEEL SQUARE

A very useful tool if you regularly need to mark out large sheets of panelling. Both arms of the square are graduated.



FOLDING SQUARE

Invaluable for large scale setting out of building profiles, foundations, floor tiling, paving, driveway construction and landscape gardening. The simple folding system makes it compact and easily portable.



SLIDING BEVEL

Designed for replicating and marking out angles, but it needs to be used in association with a protractor if you wish to set it to a specific angle.



MARKING GAUGE

Used for scoring lines along the length of a piece of wood parallel to the face edge or face side.

It is more accurate to saw or plane to a scored line than it is to work to a pencil line. The gauge consists of a stock, which rubs against the face edge or face side of the work and a graduated stem which holds a hardened scribing pin. The distance of the pin from the stock is set by a steel rule and the stem locked in position with a thumbscrew.



CHALK LINE

Used for marking straight lines on the ground, wall or ceiling. An essential part of the builders' and fitters' tool kit for setting out brick courses, tiling and installation of fitted furniture etc. The FatMax XL model raises chalk lines to new levels of performance by providing a 3 times more abrasion resistant line, together with many other innovative features.



QUICK SPIKE

An optional accessory for use with the FatMax XL chalk line that can be secured to the surface to provide an anchor point to secure the chalk line hook.



STANLEY**CARPENTER'S STEEL SQUARE**

- Steel square with buffed finish and protective lacquer coating for rust resistance
- Reverse reading scale and crisply embossed graduations for easy reading

- Face graduated every 2mm, reverse of blade every 1/8" th for detailed work
- Not supplied with data books

STANLEY				
1-45-530	600 x 400 mm	-	6	3253561455308

STANLEY**CARPENTER'S SQUARE**

- Aluminium profited mitre heel
- Extruded aluminium stock is triple riveted to the blade for strength and accuracy
- High visibility photo etched graduated stainless steel blade engraved with deep hollow (GRAVEMAT procedure)

- Stock bevelled for setting out both 90° and 45° angles
- mm graduations on both sides

STANLEY				
1-45-685	140 x 250 mm	-	6	3253561456855
1-45-686	200 x 300 mm	-	6	3253561456862
1-45-687	200 x 400 mm	-	6	3253561456879

STANLEY**FOLDING BUILDER'S SQUARE**

- Solid, light aluminium square ideal for checking and chalking in shell construction, tiling and assembly of partitions

- Measuring 1200 x 1200 x 1720 mm - 48" x 48" x 68"

STANLEY				
1-45-013	122 x 122 x 172 cm	-	4	3253561450136

STANLEY**MASON'S SQUARE**

- Constructed from lacquered drawn steel

STANLEY				
1-46-236	600 x 300 mm	-	1	3253561462368

STANLEY**PLASTIC JOINERS BEVEL**

- Sliding blade in hardened blue steel
- Chrome plated metal locking lever to secure blade

- High impact plastic moulded stock with accurately machined face

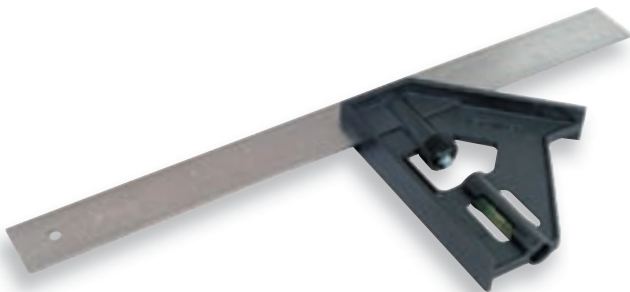
STANLEY	i	☞	☒	▮
0-46-525	190 mm	X	6	3253560465254
0-46-529	228 mm	X	6	3253560465292
0-46-535	267mm	X	6	3253560465353

STANLEY**FALSE CARPENTER'S SQUARE**

- Moulded heel with gripping grooves
- Blade blocking system
- Tough plastic handle

- Sliding nickel plated steel blade
- High carbon steel tempered blade

STANLEY	i	☞	☒	▮
0-46-825	200 mm	X	6	3253560468255

STANLEY**COMBINATION SQUARE**

- Imperial/metric graduations for ease of use
- Plastic, lightweight body
- Long lasting stamped blade easy to read

- Can be used as a try and a mitre square, depth or height gauge and spirit level

STANLEY	i	☞	☒	▮
2-46-017	300 mm / 12" (plastic)		6	3253562460172
2-46-028	300 mm (steel)		3	3253562960288

STANLEY**MULTIUSE SQUARE**

- 300mm/12" metric imperial for ease of use
- Lightweight and durable metal body with 3 machined faces for accuracy
- Easy to read, long lasting engraved blade

- 360° vial for all round visibility
- Scriber fitting for accuracy & convenience
- Can be used as a try and mitre square, depth or height gauge and spirit level

STANLEY	i	☞	☒	▮
2-46-222	300 mm	-	6	3253562462220

STANLEY**COMBINATION SQUARE**

- Machined on all faces for accuracy
- Blade etched with imperial/metric graduations in mm & cm and inch and 1/8" and 1/16"
- Can be used as a try and mitre square, depth or height gauge and spirit level

- Cast iron professional combination square for accuracy & long life
- Class I accuracy
- Available in 300mm/12" and 300mm

STANLEY	i	☞	☒	▮
0-46-151	300 mm	X	1	50112843881407

STANLEY**FatMax® XTREME™ CHALK LINE****FatMax®
XTREME™**

- Twisted polyester and cotton line for more abrasion resistance and longer life
- On-board hook storage for convenience
- Quick gear release allows you to pull out the cord without spinning the crank
- 5:1 gear ration for quick rewind
- Durable die cast aluminium housing with stainless steel hook and crank handle for strength and durability
- Clear View case - Patented chalk view means that you can see how much chalk there is left
- Integrated belt clip for convenience
- Can be used vertically as a plumb bob

STANLEY

0-47-480	30 m	X	6	3253560474805
0-47-482	Chalk line set: 30 m + blue chalk 115 g	X		3253560474829

STANLEY**FatMax® XTREME™ QUICK SPIKE****FatMax®
XTREME™**

- Hook retaining clip to lock line in place
- Hardened steel pin maintains sharp point

STANLEY

0-47-496	Quick Spike	X	6	3253560474966
-----------------	-------------	---	---	---------------

STANLEY**FatMax® CHALK LINE****FatMax®**

- Sliding door for quick and easy refill
- Metal crank folds into the case for ease of storage
- Stainless steel end hook for added durability and rust prevention
- Patented chalk view window to see exactly how much chalk you have left
- 3.5 to 1 gear ratio – rewinds 3 x faster
- Can be used vertically as a plumb bob

STANLEY

0-47-140	30 m	X	8	3253560471408
0-47-681	Chalk line set: 30 m + blue chalk 115 g + level	X	6	3253560476816

POWERWINDER CHALK LINE



- 3 1/2 to 1 gear ratio for 3.5 time faster rewind
- Clear View case so you can see the amount of chalk left inside
- Case holds 45g/ 1.5oz chalk to reduce filling times
- Stainless steel end hook does not rust

STANLEY	i	☒	☒	☒
0-47-460	30 m	X	6	3253560474607
0-47-465	Chalk line set: 30 m + blue chalk 115 g + level	X	5	3253560474652

Stanley - CHALK LINE



- Chalk line and plumb bob
- Universal hanging clip
- The line is blocked by folding the handle
- Metal case for strength and long life
- 30g chalk capacity
- Can be used vertically as a plumb bob
- Yellow colour for better visibility
- Stainless steel end hook for added durability and rust prevention
- Die cast aluminium case for durability
- The powder is put in by screwing the watertight upper milled stopper, equipped with felt to regulate the flow of powder

STANLEY	i	☒	☒	☒
0-47-050	15 m	X	6	3253560470500
0-47-100	30 m	X	6	3253560471002

Stanley OPP - CHALK LINE



- Kit contains 30m chalk line, 113g blue chalk
- Holds 100ft of String
- New Ergonomic Design
- Crank folds into case for storage
- On-Board Hook Storage
- Can be used vertically as a plumb bob
- 30g/ 1oz chalk capacity
- Stainless steel end hook does not rust
- Sliding door for quick and easy refill
- High impact ABS case for durability

STANLEY	i	☒	☒	☒
0-47-440	30 m	X	6	3253560474409
0-47-443	Chalk line set: 30 m + blue chalk 115 g + level	X	5	3253560474430

FatMax® XTREME™ CHALK

FatMax® XTREME™



- Powder specially formulated for good adhesion and high visibility
- Snap chalk lines on wet environment
- Colour recommendations
- Black for all round colour for interior and exterior use
- Red for external masonry work, indelible
- More versatile
- Waterproof and non-clumping - so can still be used if soaked with water
- Added productivity
- Snap longer lasting lines
- Less mess: reduces walk chalk
- Premium range in a commodity category

STANLEY	i	☒	☒	☒
9-47-822	Chalk black 226 g, display	X	18	3253569478224
9-47-821	Chalk red 226 g, display	X	18	3253569478217

STANLEY**CHALK REFILL**

- Powder specially formulated for good adhesion and high visibility
- Colour recommendations
- Blue: all round colour for interior and exterior use

- Red: for external masonry work, indelible
- White: for interior work such as carpet fitting

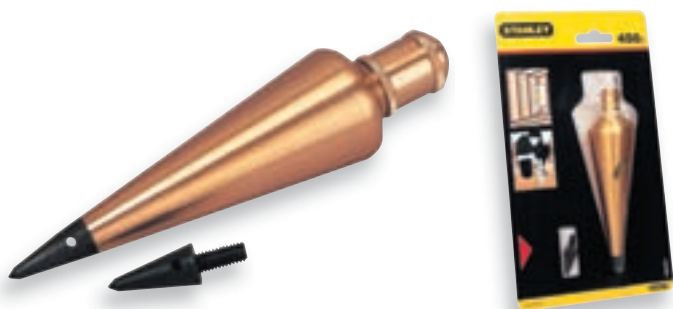
STANLEY	i	☒	☒	☒
1-47-403	115 g (Blue)	-	12	3253561474033
1-47-404	115 g (Red)	-	12	3253561474040
1-47-405	115 g (White)	-	12	3253561474057
1-47-803	225 g (Blue)	-	12	3253561478031
1-47-804	225 g (Red)	-	12	3253561478048
1-47-917	1000 g (Blue)	-	6	3253561479175
1-47-919	1000 g (Red)	-	6	3253561479199

STANLEY**TRUNCATED PLUMB BOB**

- Truncated traditional plumb bob in turned die-cast metal

- Machined die-cast plate
- Reinforced line

STANLEY	i	☒	☒	☒
0-47-160	3 m x 500 g	X	6	3253560471606

STANLEY**ARCHITECT'S PLUMB BOB**

- Additional tip included on 8 oz size
- Thru hole for easy tightening
- Polished lacquered solid brass construction resists rust

- Screw top to easily attach string to center of plumb
- Long profile with line affixation nut and interchangeable point (supplied with 1 change point) in hardened steel

STANLEY	i	☒	☒	☒
0-47-973	225 g	X	6	3253560479732

STANLEY**REPLACEMENT CHALK LINE**

- 30 m replacement line for all chalk lines

STANLEY	i	☒	☒	☒
0-47-101	30 m	X	6	3253560471019

STANLEY**STYRETE MARKING GAUGE**

- With graduation for easy measuring - Graduation at 2 mm
- Stem calibrated for easy setting
- Plastic stock with metal insert for abrasion resistance

- Graduation at 2 mm
- Plastic marking gauge
- Tough impact styrene with metal face plate for long wear

STANLEY	i	☒	☒	☒
2-47-064	215 mm	X	5	3253562470645

STANLEY**FatMax® XTREME™ CHISEL/FINE TIP PERMANENT MARKER****FatMax®
XTREME™**

47-314



- Permanent ink makes it ideal to mark out in all weather/environmental conditions
- Squared shape
- Durable chisel tip (broad and fine)
- Black or color ink
- Fast drying
- Strong, durable tip reduces wear and tear even when used on abrasive surfaces
- Water and oil resistant ink
- Bimaterial (easy to use Marking cooper roofing material)



47-315



47-312

STANLEY

0-47-312	Black Fine Tip - Carded	X	2	3253560473129
0-47-314	Black Chisel Tip - Carded	X	2	3253560473449
1-47-344	Black Chisel Tip - Container	-	25	3253560473150
0-47-315	Black, Red, Blue Chisel Tip - Carded	X	3	3253560473150

STANLEY**FINE TIP PERMANENT MARKER**

- Quick drying water resistant ink marks on almost any surfaces
- Permanent ink for use on variety of surfaces
- Available in both fine tip – black ink and chisel tip options – red / blue / black ink

STANLEY

0-47-316	Std Black Fine Tip - Carded	X	24	3253560473167
1-47-346	Std Black Fine Tip - Container	-	50	3253561473160

STANLEY**Stanley MINI FINE TIP MARKERS X 4**

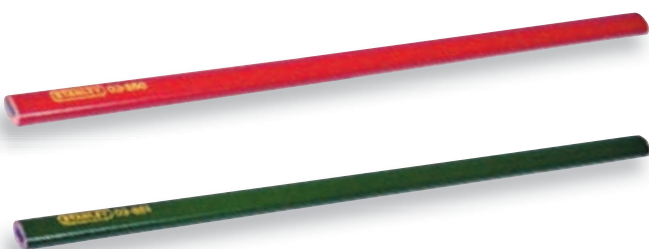
47-329

47-324

- Quick drying ink is ideal for avoiding smudged lines
- In variety of colours for different applications (black, red, green and blue e.g live, earth and neutral)
- Permanent ink allows marker to be used on a variety of surfaces
- Ideal for electricians, plumbers, masons, carpenters, and many other industrial applications
- Permanent marking on any type of materials: concrete, coating roof, metal, wood, pipe, welding
- Water resistant ink
- Fine tip
- Pocket size - 3cm

STANLEY

1-47-324	Mini Black Fine Tip - Container	-	72	3253561473241
2-47-329	black, red, green, blue	X	12	3253562473295
1-47-329	Mini Black, Red, Green, Blue Fine Tip - Container	-	72	3253561473296

STANLEY**CARPENTER'S PENCIL**

- Oval carpenter's pencil
- Rectangular graphite core (HB) for clear marking

STANLEY

0-93-931	2 x Red carpenter's 300 mm	X	6	3253560939311
1-03-850	Red carpenter's, 300 mm	-	72	3253561038501
0-93-932	2 x Green Mason's, 300 mm	X	6	3253560939328
1-03-851	Green Mason's, 300 mm	-	72	3253561038518

TIPS AND TECHNIQUES



COMBINATION SQUARE

Surface and edge preparation

STEP 1 Plane the face of the wood and check that the surface is flat across its width and true along its length. When you are satisfied that it is perfectly true, mark it with the traditional 'Face Side' mark.

STEP 2 Plane the adjacent edge true, flat and square.

STEP 3 Place the stock of the square on the face side surface and look to see if there is any light showing between blade and wood. Check the wood at several points down the length.

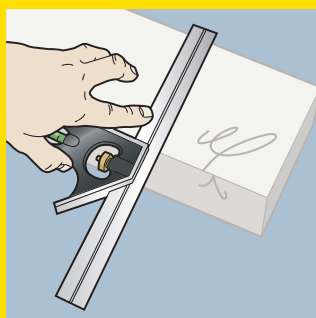
STEP 4 Make fine adjustments with the plane. When square, mark this edge with the 'Face Edge' sign.

From here on all marking with a square, bevel or marking gauge should be only from the face side or face edge.



MARKING A LINE ON ALL FOUR FACES

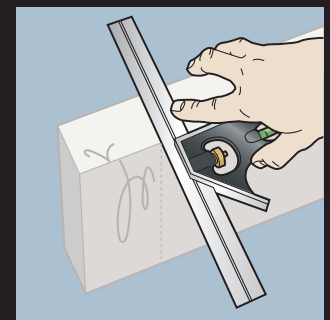
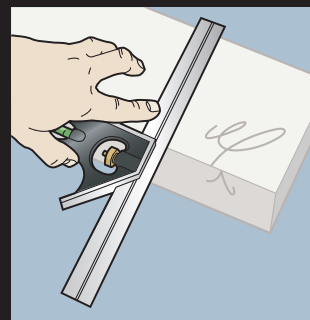
This should be done with a knife for greater accuracy, plus it is easier to work to a cut line rather than a pencil line.



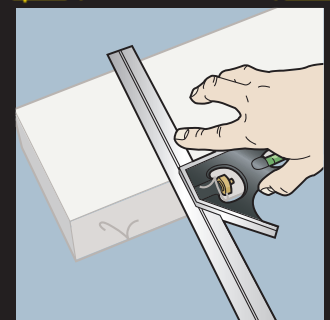
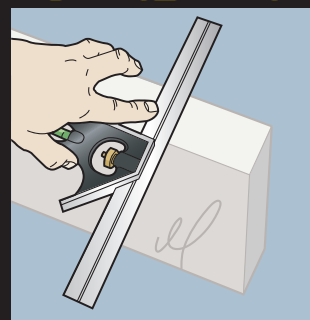
STEP 1 To scribe a line across the face side, hold the stock tightly against the face edge of the wood using your thumb and three fingers.

Your index finger should be against the inside edge of the square blade to prevent it from slipping when you press the knife against the outer edge to scribe the line.

STEP 2 To score a line across the face edge, turn the square to place the stock against the face side, place the knife blade into the previous cut and slide the square blade up to the knife blade.



STEP 3 Repeat this on the remaining two sides always ensuring that the stock is against the face side or face edge.



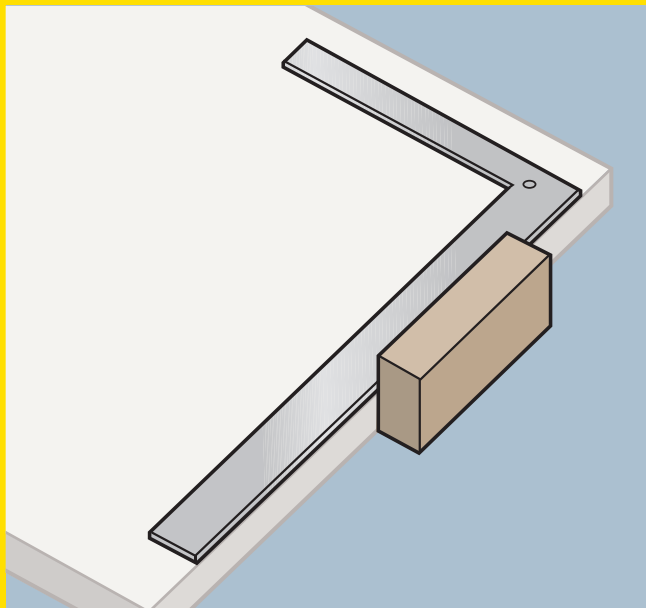
TOP TIP If several items of the same length are required, clamp them together and mark all at the same time.

TIPS AND TECHNIQUES



LARGE STEEL SQUARE SQUARES

These do not have a stock to hold against the work edge, so to position the square accurately use a spare piece of wood held against the edge and position the square against that.



SLIDING BEVEL

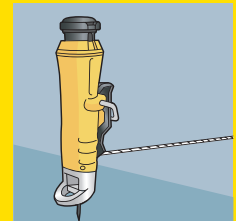
These can be used for surface/edge preparation and marking out as the Try Square, however, take care when there are bevels at each end of a piece of wood. Always mark from the face side or face edge and check that the bevels are facing in the correct direction.

CHALK LINE

Needs only a little practice for you to become a competent user.

STEP 1 Check that the case is well charged with chalk and give it a shake from time to time to ensure that the cord is well chalked. With a new line, draw the cord out to its full extent, pour in a small amount of chalk and rewind it. Complete filling when the cord is fully rewound.

STEP 2 Anchor the end hook securely at one end of the piece to be marked (the Stanley Quick Spike is specially designed to make this as easy as possible).



STEP 3 Draw out the chalked line and lock the crank handle into place to enable you to tension the cord.

STEP 4 Place the cord carefully onto the correct position on the work.

With finger and thumb lift the cord a few centimetres to create some tension and then allow it to 'snap' onto the surface to be marked. You should now have a well-defined line to continue working to.



STEP 5 Rewind away from the marked line to avoid contaminating the work surface and line.

IMPORTANT Keep your chalk line free from moisture and for surfaces to be painted, check that the chalk does not 'bleed' through paint.

When using near furnishings, check that the chalk does not stain fabrics or carpets.